

Joscha Bruckert
desk@bruckert.nl

This portfolio showcases collaborative work created during my time at RGBERLIN (rgberlin.com), alongside my own projects. RGBERLIN was founded in 2013 by Georg Parthen and Nicolas Wollnik and was joined by Joscha Bruckert from 2017 to 2024. The studio adopts a collaborative approach among its lead artists, encompassing the entire postproduction process. This includes shared responsibilities for projects, concept development, art direction, color grading, retouching, workflow management, team coordination, client communication, and final asset creation.

References include 032c, Adidas, Apple, Arc'teryx, Cartier, Chanel, Converse, J.W. Anderson, Kenzo, Lamy, Louis Vuitton, Maison Margiela, Mercedes-Benz, Montblanc, New Tendency, Nike, Ray Ban, Rimowa, Salomon, SieMatic, Sony, Ssense, Swatch, TAG Heuer, Tom Ford, Vitra.



Air Max Plus, Studio Qiu Yang for Nike Basketball, portfolio edit (at RGBERLIN)



Première Iconic, Haw-lin Services for Chanel (at RGBERLIN)



RetaW, Haw-lin Services for The New Order Magazine (at RGBERLIN)



Kira Bunse for Russh Magazine



Lukas Wassmann for Masses Magazine



Plume de Chanel Ring, Haw-lin Services for Chanel (at RGBERLIN)



Air Max DN, Studio Qiu Yang for Nike Basketball, portfolio edit (at RGBERLIN)



ACC01 Capsule Collection, acte™ × Mercedes-Benz (at RGBERLIN)



Play it as it Lays, Bennie Julian Gay for Document Journal (at RGBERLIN)



Ask for the Moon, Haw-lin Services for Chanel (at RGBERLIN)



Elements, Justinas Vilutis for V Magazine (at RGBERLIN)



Fahim Kassam for Sporty And Rich Beauty (at RGBERLIN)



AF 1 Gore-Tex, Justinas Vilutis for Nike Basketball (at RGBERLIN)



Adapt Ear1, Haw-lin Services for Nike Basketball (at RGBERLIN)



Montblanc Ultrablack, Studio Qiu Yang for Montblanc (at RGBERLIN)



Portfolio work with Phillip Koll (at RGBERLIN)



Neven Allgeier for Buck Bags (at RGBERLIN)



Ask for the Moon, Haw-lin Services for Chanel (at RGBERLIN)



NYX Mug, Studio Amos Fricke for Christian Metzner Brandenburg (at RGBERLIN)



Pacebreaker, Haw-lin Services for Lululemon (at RGBERLIN)



Portfolio work with Global Studio × Victor Leverrier (at RGBERLIN)



Lukas Wassmann for 032c



Haw-lin Services for David Yurman (at RGBERLIN)



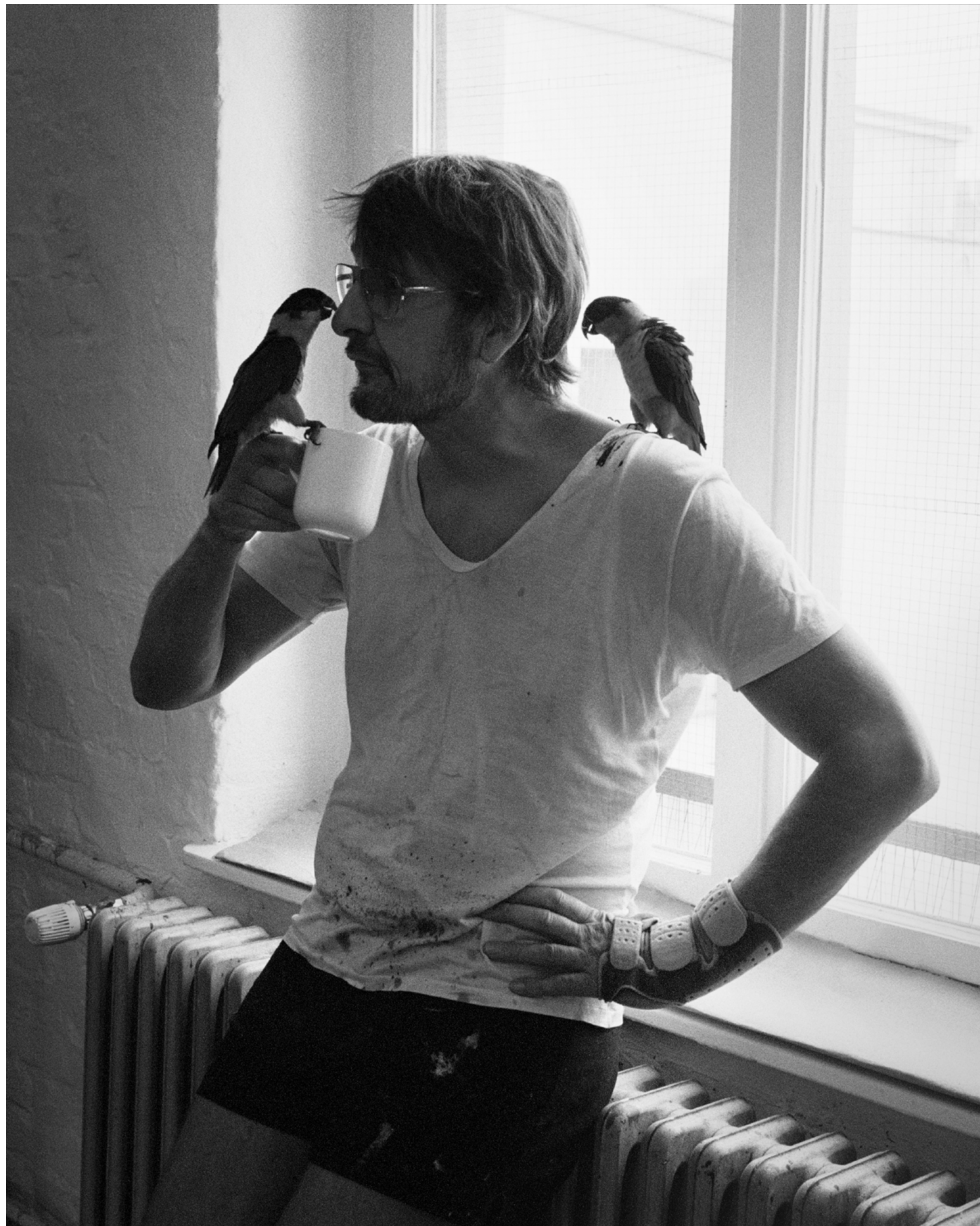
Sleeping Dua Lipa, Neven Allgeier for ZEIT Magazin (at RGBERLIN)



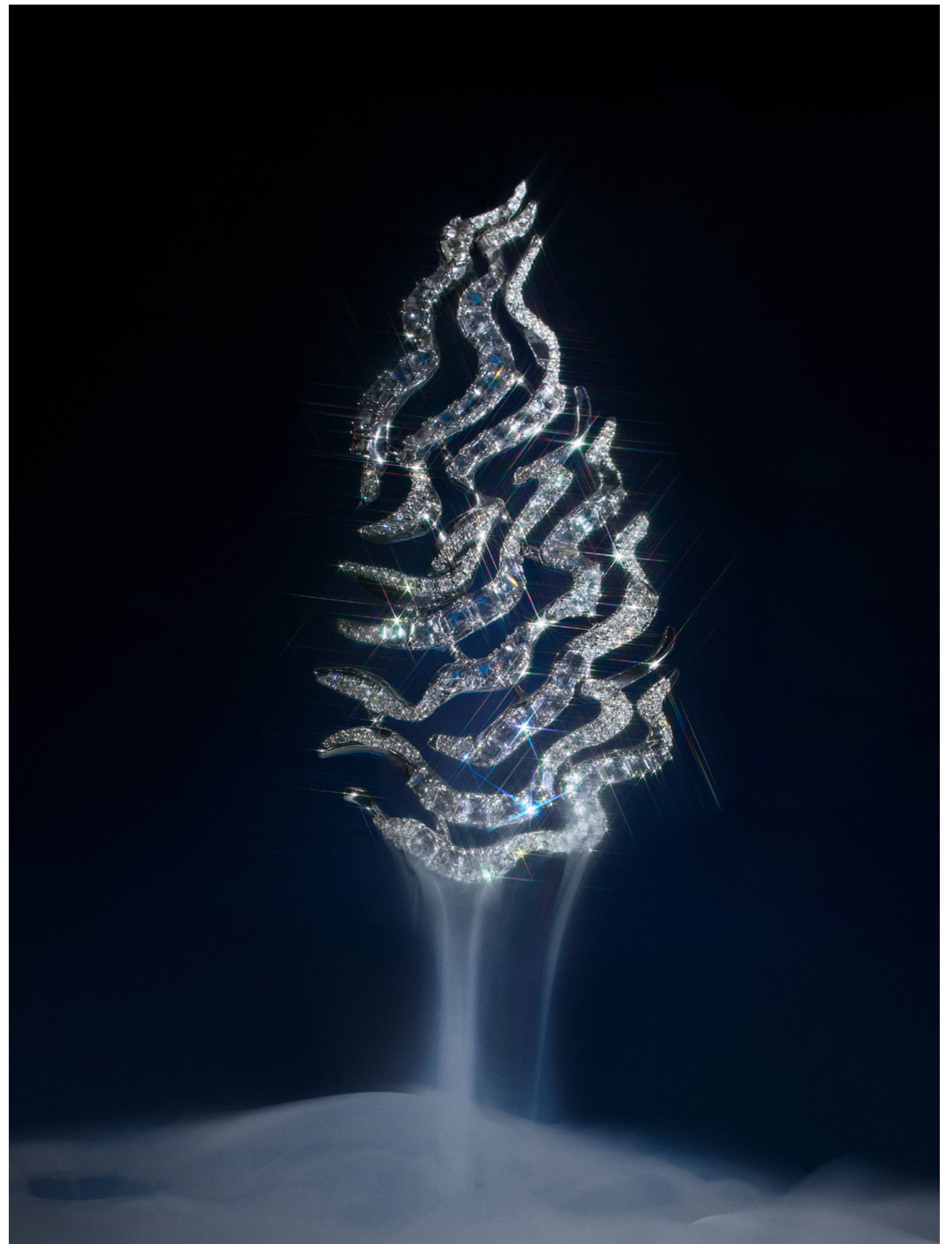
Tais Sirote for Cactus Magazine (at RGBERLIN)



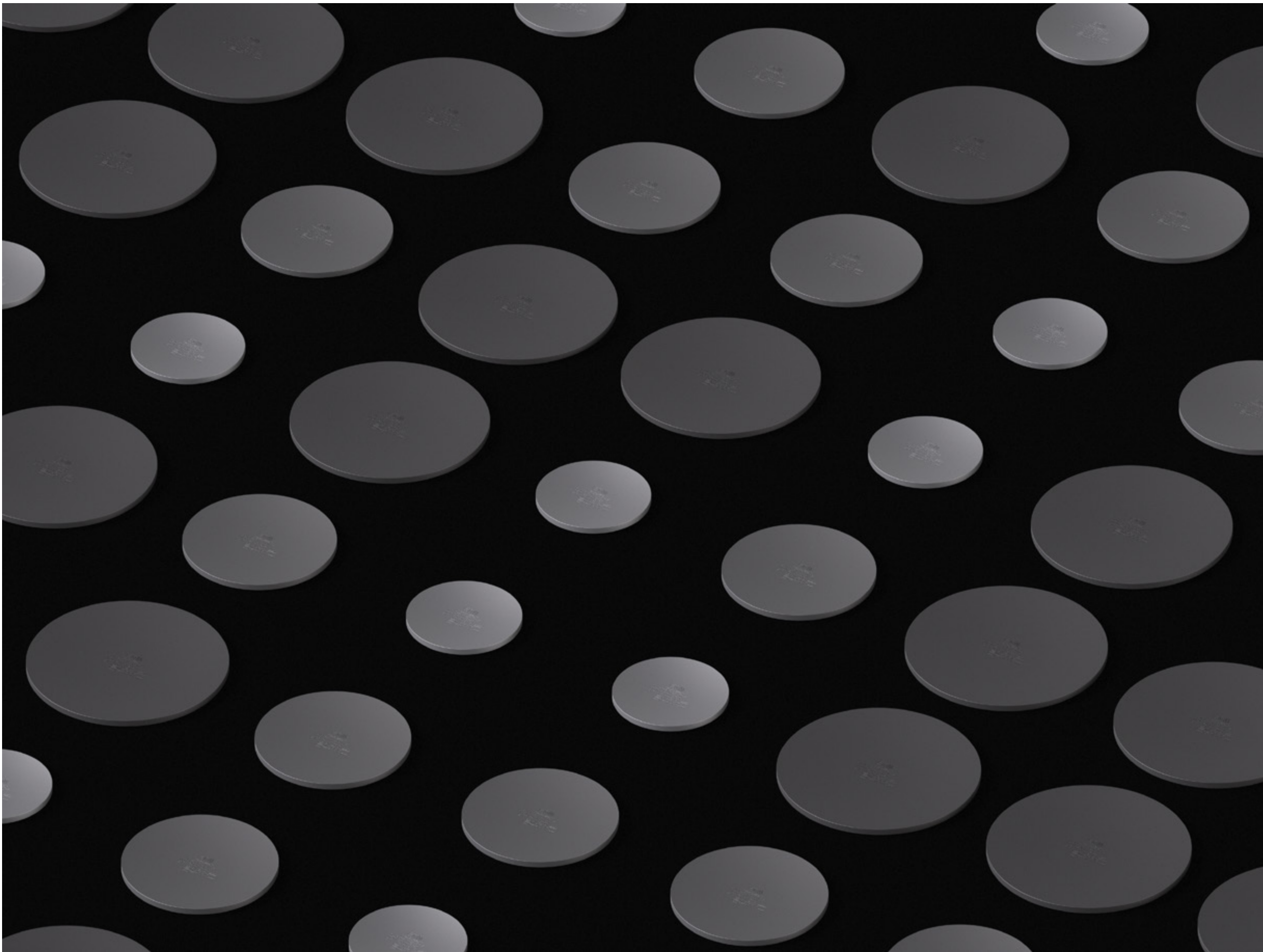
Mercurial Superfly, Studio Qiu Yang for Nike Global Football (at RGBERLIN)



Daniel Richter, Hanna Putz for Süddeutsche Zeitung Magazin (at RGBERLIN)



Smoke Collection, Mirka Laura Severa for Bibi van der Velden (at RGBERLIN)



Rimowa Artefacts, Colors And The Kids for Nuova (at RGBERLIN)



Meta Side Table, Haw-lin Services for New Tendency (at RGBERLIN)



N°5 Broche, Haw-lin Services for Chanel Haute Joaillerie (at RGBERLIN)



Mars & Coco in Danke Darling by Milena Braune (at RGBERLIN)



Neven Allgeier, Fading Temples, Distanz Verlag (at RGBERLIN)



Subspecies, Haw-lin Services × Anatolik Belikov for Räthel & Wolf (at RGBERLIN)



J12 Calibre, Haw-lin Services for Chanel (at RGBERLIN)



WP 25 Weddingpaper, Josh David Payne for Wallpaper* (at RGBERLIN)



Less Rim, Haw-lin Services for Mykita (at RGBERLIN)



Aura of Agate, Studio Amos Fricke for Trendland (at RGBERLIN)



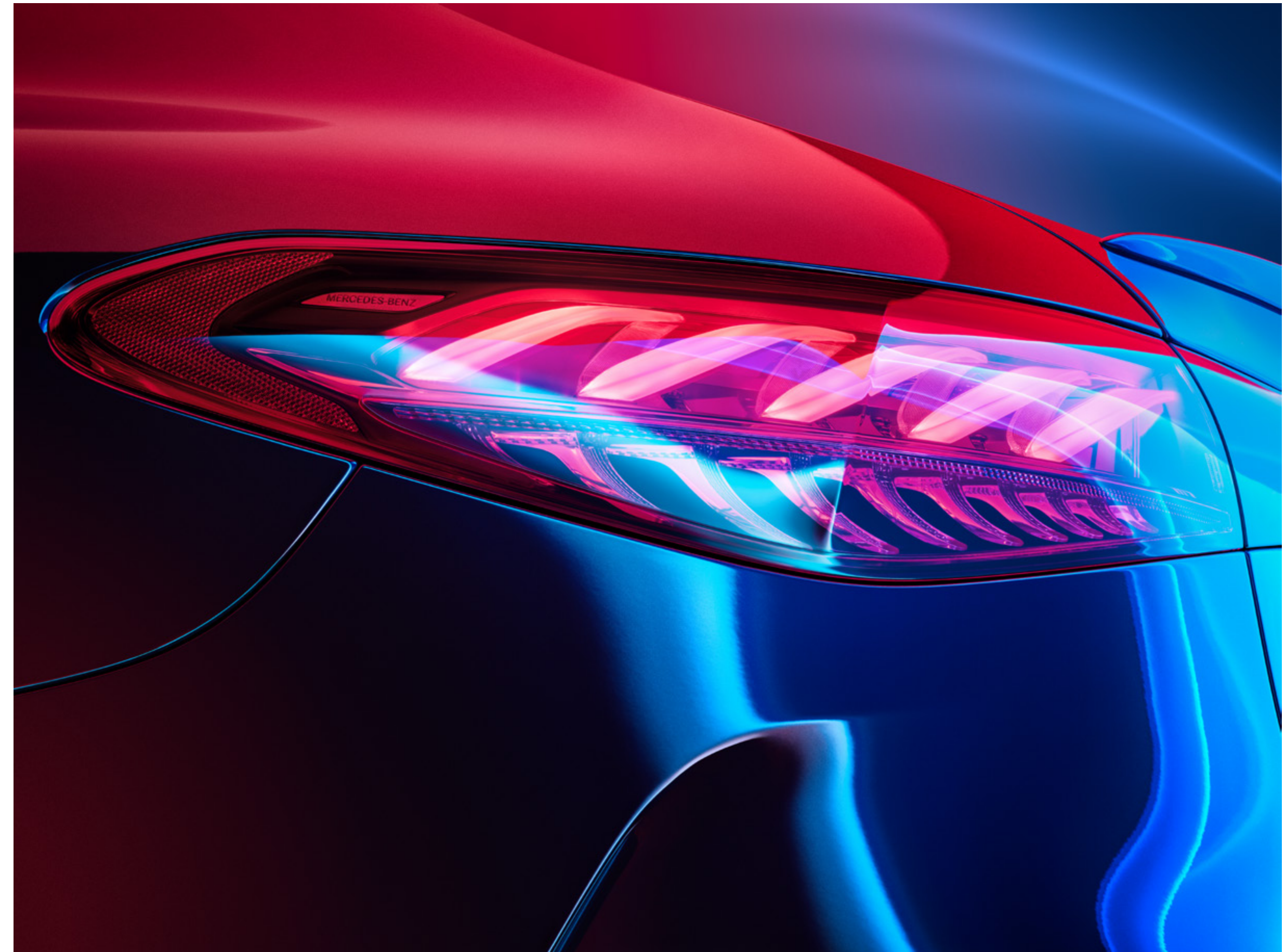
Souvenirs of Japan, Haw-lin Services for Souvenirs of (at RGBERLIN)



Mohnwiese, Anne Schwalbe Gartenkolumne for Zeit Magazine (at RGBERLIN)



Yen Tech Mobis, Ruiné × Sucuk und Bratwurst for DIS Magazine



Model Neutral Campaign III, Studio Amos Fricke for Mercedes-Benz (at RGBERLIN)



Moody, portfolio work with Tais Sirote × Lucy Webster (at RGBERLIN)



Medea × D'Heygere, Lara Ziörjen for Pull Letter Magazine (at RGBERLIN)



Hugo Kreit, portfolio work with Jeremy Ayer Studio (at RGBERLIN)



Haw-lin Services for J.W. Anderson (at RGBERLIN)



Play it as it Lays, Bennie Julian Gay for Document Journal (at RGBERLIN)



Medea x D'Heygere, Lara Ziörjen for Pull Letter Magazine (at RGBERLIN)



Haw-lin Services for Louis Vuitton (at RGBERLIN)



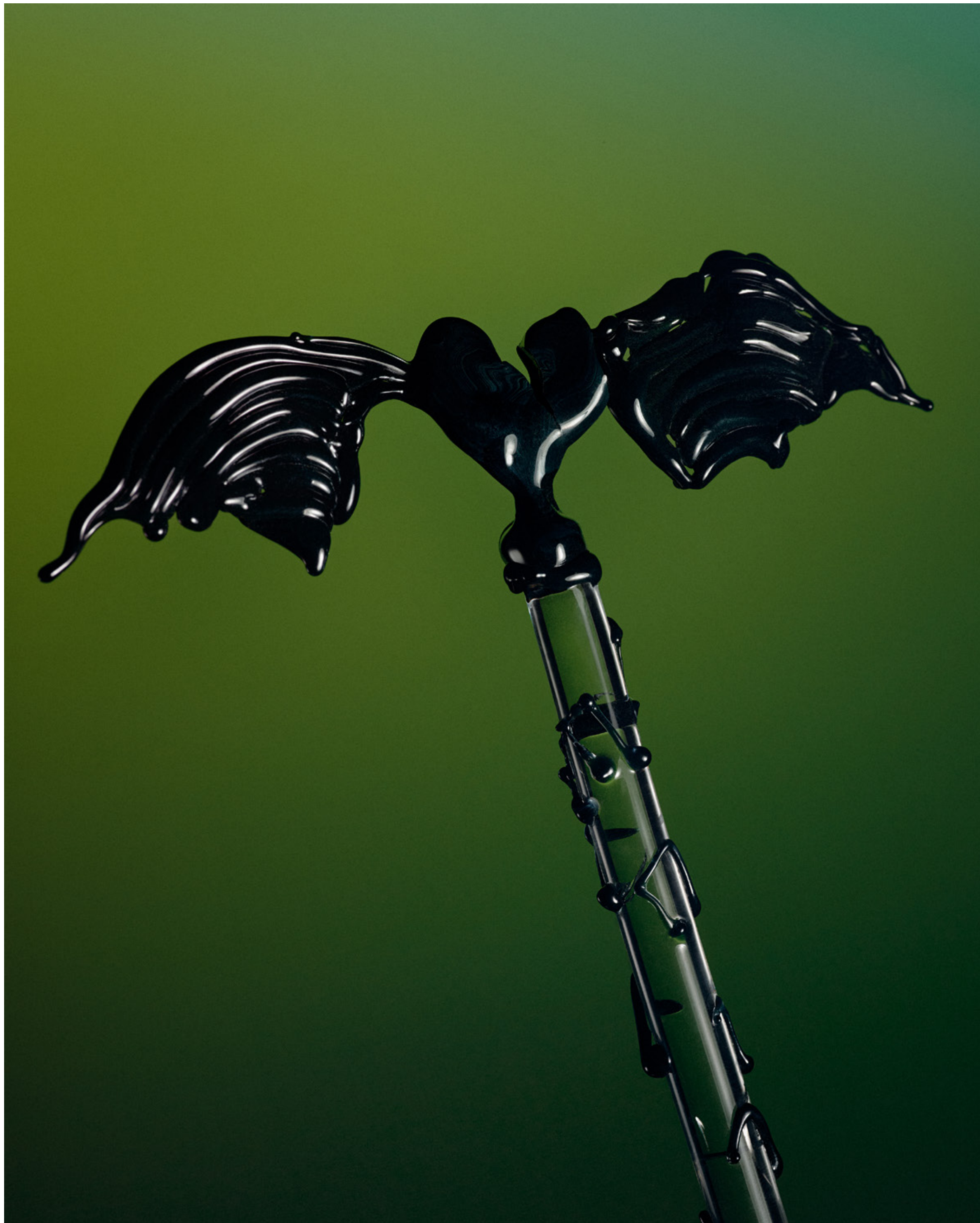
J12 Calibre, Haw-lin Services for Chanel (at RGBERLIN)



Josh David Payne for Wallpaper* (at RGBERLIN)



Montblanc Ultrablack, Studio Qiu Yang for Montblanc (at RGBERLIN)



Portfolio work with Global Studio × Victor Leverrier (at RGBERLIN)



Coco Crush, Haw-lin Services for Chanel (at RGBERLIN)



Elements, Justinas Vilutis for V Magazine (at RGBERLIN)



Lamborghini Diablo, portfolio work with Studio Amos Fricke (at RGBERLIN)



Thulani chair, Timothy Schaumburg for Reidar Mester (at RGBERLIN)



Tokyo, Anne Schwalbe Gartenkolumne for ZEIT Magazine (at RGBERLIN)



Tohji, acte™ for 032c (at RGBERLIN)



Stadt der Commonisten, Inga Kerber for Transcript Verlag

Joscha Bruckert
desk@bruckert.nl

Extended portfolio available on request